



IDEXX

SNAP® Test Quick Reference Guide

Table of contents

SNAP test kits at a glance.....	3
SNAP Pro® Analyzer	4
SNAP® 4Dx® Plus Test.....	5
SNAP® Heartworm RT Test.....	6
SNAP® Feline Triple® Test.....	7
SNAP® FIV/FeLV Combo Test	8
SNAP® cPL™ Test.....	9
SNAP® fPL™ Test.....	10
SNAP® Parvo Test	11
SNAP® <i>Giardia</i> Test.....	12
SNAP® Feline proBNP Test.....	13
SNAP® Lepto Test.....	14
SNAP® FeLV Antigen Test.....	15
SNAP® Foal IgG Test.....	16

Key



Supported species.



Read time in minutes.



Store at room temperature or in refrigerator.



Store in refrigerator.

ALL components MUST be at room temperature before the test is run.

SNAP test kits at a glance

Test name [†]	Supported sample types				Storage* Refrigerated = 2°C–8°C Room temperature = 2°C–25°C	Sample size	Drops of solution	Read time (minutes)
	Fecal	Anticoagulated whole blood	Plasma	Serum				
SNAP [®] 4Dx [®] Plus Test		●	●	●	Refrigerated until expiration, or room temperature for 90 days	3 drops	4	8
SNAP [®] Heartworm RT Test		●	●	●	Room temperature until expiration	3 drops	4	8
SNAP [®] Feline Triple [®] Test		●	●	●	Refrigerated until expiration	3 drops	4	10
SNAP [®] FIV/FelV Combo Test		●	●	●		3 drops	4	10
SNAP [®] cPL [™] Test				●		3 drops	4	10
SNAP [®] fPL [™] Test				●		3 drops	4	10
SNAP [®] Parvo Test	●					Room temperature until expiration	Coat entire swab tip with a thin layer of fecal material.	5
SNAP [®] <i>Giardia</i> Test	●				Refrigerated until expiration	Coat entire swab tip with a thin layer of fecal material.	5	8
SNAP [®] Feline proBNP Test			●	●		3 drops	5	10
SNAP [®] Lepto Test				●		3 drops	4	10
SNAP [®] FeLV Antigen Test		●	●	●		3 drops	4	10
SNAP [®] Foal IgG Test		●	●	●		1 drop	Entire bottle, or until well is full	7

*Refer to package insert for complete storage requirements.

†Before beginning any test, refer to the package insert for complete instructions.

SNAP Pro® Analyzer

IMPORTANT: Prepare the SNAP test, but do not activate the test.*

When prompted by the SNAP Pro, gently slide the SNAP test into the port at the bottom of the analyzer (well end first) until it clicks into position.



Wrong



Right

When analysis is complete, results are shown on the results screen and are saved on the analyzer automatically. The color of the status light indicates the results of the run:



Solid green

All results are negative.



Flashing blue

At least one result is positive.



Flashing yellow

Visual confirmation needed.
(See operator's guide for more information).

Interpreting SNAP Pro icons

Icon	Description
	Wireless (Wi-Fi) signal status (5 gray bars = best signal; 5 red bars = no signal)
	Lost Wi-Fi communication
	Connected and communicating with the IDEXX VetLab® Station via a wired connection (red icon indicates the analyzer is off-line)
	Lost Ethernet connection
	Battery charging

Icon	Description
	Software upgrade is available (SmartService® Solutions customers only)
	Warning notification (gray icon indicates the warning has been viewed and is unresolved)
	Error notification (gray icon indicates the error has been viewed and is unresolved)
	Lost communication with IDEXX VetLab Station

For more information or to order this product, visit idexx.com/prohelp.

*Before beginning any test, refer to the package insert for complete instructions.

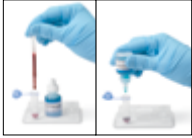
SNAP® 4Dx® Plus Test

Screen dogs annually for six vector-borne diseases.



Can be stored at room temperature for 90 days.*

Test procedure†



1. Using the provided pipette, dispense **3 drops of sample** and **4 drops of conjugate** to the sample tube.
2. Gently **invert 3–5 times** to mix.
3. Pour the entire contents of the sample tube into the sample well of a SNAP 4Dx Plus device.
4. Use the SNAP Pro® Analyzer to automatically activate the SNAP test and interpret the result.
OR
When color **first** appears in the activation circle, press firmly to activate. You will hear a distinct “snap.”
5. Read the result at **8 minutes**.

Whole blood[§], serum,
or plasma sample

Positive control

E. canis/E. ewingii Ab

B. burgdorferi Ab

A. phagocytophilum/

A. platys Ab

D. immitis Ag

For more information or to order this test, visit idexx.com/snap4dxplus.

*Tests expire after 90 days at room temperature. If not stored at room temperature, tests can be refrigerated until expiration date. Refer to package insert for complete storage requirements.

†Before beginning any test, refer to the package insert for complete instructions.

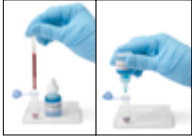
§Anticoagulated whole blood (e.g., EDTA, heparin).

SNAP® Heartworm RT Test

Screen annually for heartworm.



Test procedure*



1. Using the provided pipette, dispense **3 drops of sample** and **4 drops of conjugate** to the sample tube.

2. Gently **invert 3–5 times** to mix.

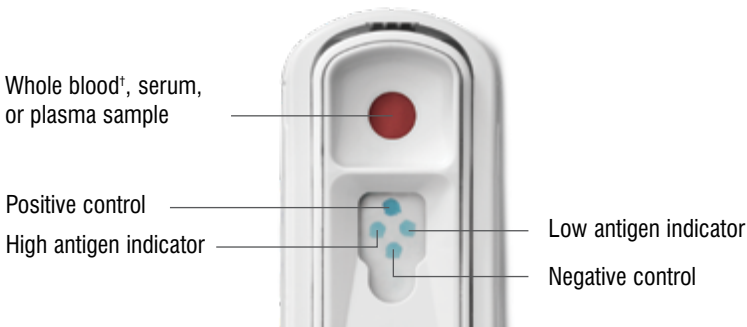
3. Pour the entire contents of the sample tube into the sample well of a SNAP Heartworm RT device.

4. Use the SNAP Pro® Analyzer to automatically activate the SNAP test and interpret the result.

OR

When color **first** appears in the activation circle, press firmly to activate. You will hear a distinct “snap.”

5. Read the result at **8 minutes**.



For more information or to order this test, visit idexx.com/heartworm.

*Before beginning any test, refer to the package insert for complete instructions.

†Anticoagulated whole blood (e.g., EDTA, heparin)

SNAP® Feline Triple® Test

Test all new-to-household, sick, and at-risk cats, as well as cats with respiratory or vomiting symptoms, for feline immunodeficiency virus (FIV), feline leukemia virus (FeLV), and feline heartworm.



Test procedure*



1. Using the provided pipette, dispense **3 drops of sample** and **4 drops of conjugate** to the sample tube.



2. Gently **invert 3–5 times** to mix.



3. Pour the entire contents of the sample tube into the sample well of a SNAP Feline Triple device.



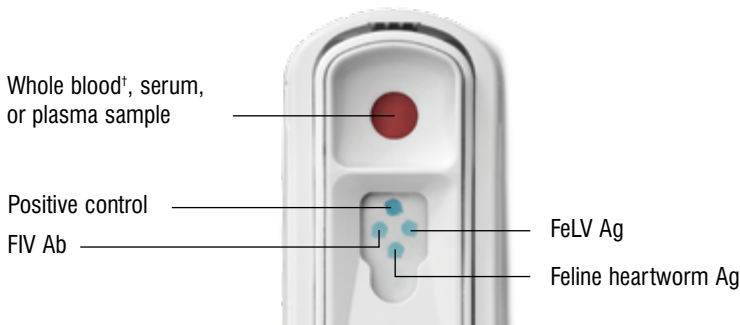
4. Use the SNAP Pro® Analyzer to automatically activate the SNAP test and interpret the result.

OR

When color **first** appears in the activation circle, press firmly to activate. You will hear a distinct “snap.”



5. Read the result at **10 minutes**.



For more information or to order this test, visit idexx.com/snapfelinetriple.

*Before beginning any test, refer to the package insert for complete instructions.

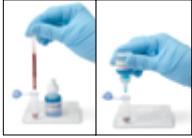
[†]Anticoagulated whole blood (e.g., EDTA, heparin)

SNAP® FIV/FeLV Combo Test

Test all new-to-household, at-risk, and symptomatic cats for feline immunodeficiency virus (FIV) and feline leukemia virus (FeLV).



Test procedure*



1. Using the provided pipette, dispense **3 drops of sample** and **4 drops of conjugate** to the sample tube.

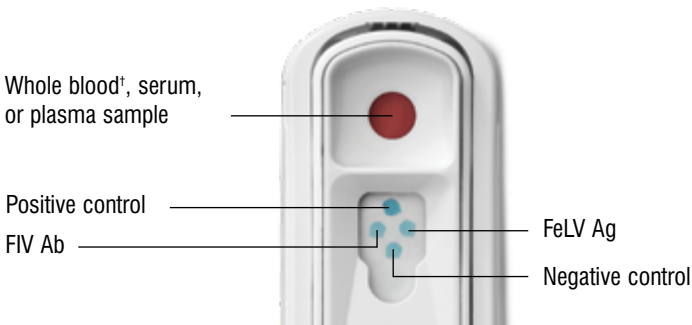
2. Gently **invert 3–5 times** to mix.

3. Pour the entire contents of the sample tube into the sample well of a SNAP FIV/FeLV Combo device.

4. Use the SNAP Pro® Analyzer to automatically activate the SNAP test and interpret the result.

OR
When color **first** appears in the activation circle, press firmly to activate. You will hear a distinct “snap.”

5. Read the result at **10 minutes**.



For more information or to order this test, visit idexx.com/snapcombo.

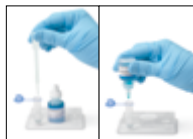
*Before beginning any test, refer to the package insert for complete instructions.

†Anticoagulated whole blood (e.g., EDTA, heparin)

Test dogs that present with vomiting, anorexia, and/or abdominal pain.



Test procedure*



1. Using the provided pipette, dispense **3 drops of sample** and **4 drops of conjugate** to the sample tube.



2. Gently **invert 3–5 times** to mix.



3. Pour the entire contents of the sample tube into the sample well of a SNAP cPL device.



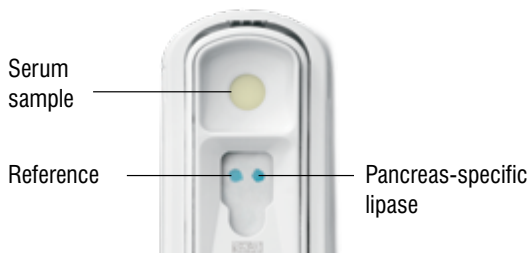
4. Use the SNAP Pro® Analyzer to automatically activate the SNAP test and interpret the result.

OR

When color **first** appears in the activation circle, press firmly to activate. You will hear a distinct “snap.”



5. Read the result at **10 minutes**.



Abnormal

Sample spot is the same color or darker than reference spot.



Normal

Sample spot is lighter than reference spot.

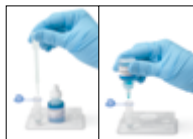
For more information or to order this test, visit idexx.com/snapcpl.

SNAP® fPL™ Test

Test cats that present with lethargy, decreased appetite, dehydration, weight loss, vomiting, and/or diarrhea.



Test procedure*



1. Using the provided pipette, dispense **3 drops of sample** and **4 drops of conjugate** to the sample tube.



2. Gently **invert 3–5 times** to mix.



3. Pour the entire contents of the sample tube into the sample well of a SNAP fPL device.



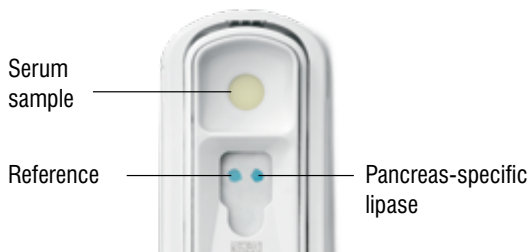
4. Use the SNAP Pro® Analyzer to automatically activate the SNAP test and interpret the result.

OR

When color **first** appears in the activation circle, press firmly to activate. You will hear a distinct “snap.”



5. Read the result at **10 minutes**.



Abnormal

Sample spot is the same color or darker than reference spot.



Normal

Sample spot is lighter than reference spot.

For more information or to order this test, visit idexx.com/snapfpl.

*Before beginning any test, refer to the package insert for complete instructions.

SNAP® Parvo Test

Test dogs that present with sudden onset of lethargy, vomiting, fever, and diarrhea.



Can be stored at room temperature.*

Test procedure†



1. Swab sample‡ and place swab tip into tube. Bend bulb to break seal and release conjugate.



2. Squeeze and release bulb **3 times** to mix sample and conjugate.



3. Squeeze bulb to dispense **5 drops** into the sample well of a SNAP Parvo device.



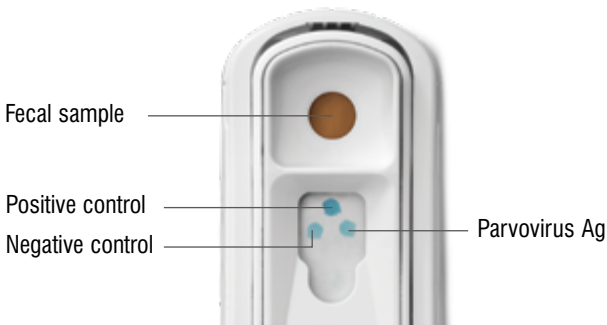
4. Use the SNAP Pro® Analyzer to automatically activate the SNAP test and interpret the result.

OR

When color **first** appears in the activation circle, press firmly to activate. You will hear a distinct “snap.”



5. Read the result at **8 minutes**.



For more information or to order this test, visit [idexx.com/parvo](https://www.idexx.com/parvo).

*Refer to package insert for complete storage requirements.

†Before beginning any test, refer to the package insert for complete instructions.

‡The collection swab is not intended to be used rectally.

SNAP® Giardia Test

Test dogs and cats that present with diarrhea.



Test procedure*



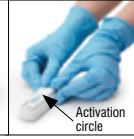
1. Swab sample† and place swab tip into tube. Bend bulb to break seal and release conjugate.



2. Squeeze and release bulb **3 times** to mix sample and conjugate.



3. Squeeze bulb to dispense **5 drops** into the sample well of a SNAP Giardia device.



4. Use the SNAP Pro® Analyzer to automatically activate the SNAP test and interpret the result.

OR

When color **first** appears in the activation circle, press firmly to activate. You will hear a distinct "snap."



5. Read the result at **8 minutes**.



For more information or to order this test, visit [idexx.com/giardia](https://www.idexx.com/giardia).

*Before beginning any test, refer to the package insert for complete instructions.

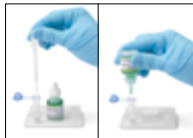
†The collection swab is not intended to be used rectally.

SNAP® Feline proBNP Test

Test cats at risk for cardiac disease (murmur, arrhythmia, respiratory signs, prior to anesthesia, breed, history, age).



Test procedure*



1. Using the provided pipette, dispense **3 drops of sample** and **5 drops of green conjugate** to the sample tube.



2. Gently **invert 3–5 times** to mix.



3. Pour the entire contents of the sample tube into the sample well of a SNAP Feline proBNP device.



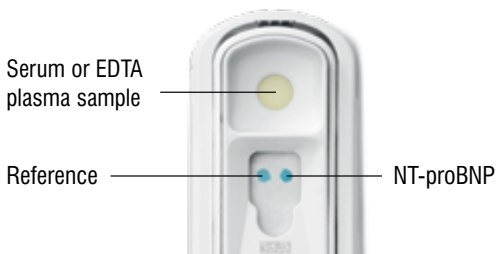
4. Use the SNAP Pro® Analyzer to automatically activate the SNAP test and interpret the result.

OR

When color **first** appears in the activation circle, press firmly to activate. You will hear a distinct “snap.”



5. Read the result at **10 minutes**.



Abnormal

Sample spot is the same color or darker than reference spot.



Normal

Sample spot is lighter than reference spot.

For more information or to order this test, visit [idexx.com/snapprobnp](https://www.idexx.com/snapprobnp).

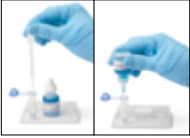
*Before beginning any test, refer to the package insert for complete instructions.

SNAP® Lepto Test

Test dogs when leptospirosis is suspected.



Test procedure*



1. Using the provided pipette, dispense **3 drops of sample** and **4 drops of conjugate** to the sample tube.



2. Gently **invert 3–5 times** to mix.



3. Pour the entire contents of the sample tube into the sample well of a SNAP Lepto device.



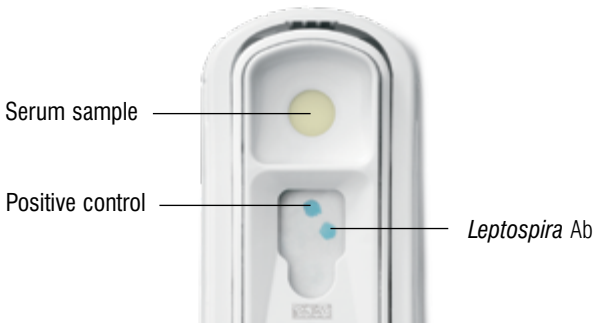
4. Use the SNAP Pro® Analyzer to automatically activate the SNAP test and interpret the result.

OR

When color **first** appears in the activation circle, press firmly to activate. You will hear a distinct “snap.”



5. Read the result at **10 minutes**.



For more information or to order this test, visit [idexx.com/snapplepto](https://www.idexx.com/snapplepto).

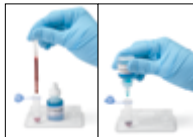
*Before beginning any test, refer to the package insert for complete instructions.

SNAP® FeLV Antigen Test

Test cats for feline leukemia virus (FeLV).



Test procedure*



1. Using the provided pipette, dispense **3 drops of sample** and **4 drops of conjugate** to the sample tube.



2. Gently **invert 3–5 times** to mix.



3. Pour the entire contents of the sample tube into the sample well of a SNAP FeLV Antigen device.



4. Use the SNAP Pro® Analyzer to automatically activate the SNAP test and interpret the result.

OR

When color **first** appears in the activation circle, press firmly to activate. You will hear a distinct “snap.”

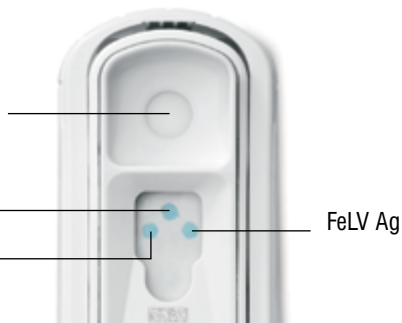


5. Read the result at **10 minutes**.

Whole blood†, serum,
or plasma sample

Positive control

Negative control



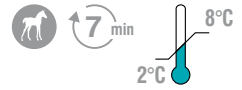
For more information or to order this test, visit [idexx.com/snapfelv](https://www.idexx.com/snapfelv).

*Before beginning any test, refer to the package insert for complete instructions.

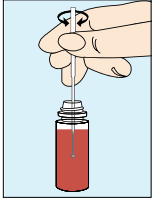
†Anticoagulated whole blood (e.g., EDTA, heparin)

SNAP® Foal IgG Test

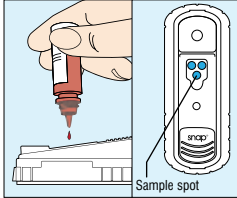
Test foals for immunoglobulin G (IgG) levels.



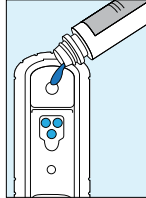
Test procedure*



1. Dilute sample.†
Mix thoroughly and dispose of the first **5–10 drops** from the bottle.



2. Apply **1 drop** of sample over sample spot.



3. Pour the entire bottle of conjugate into the sample well.



4. When color **first** appears in the activation circle, press firmly to activate. You will hear a distinct “snap.”



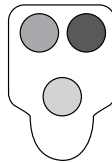
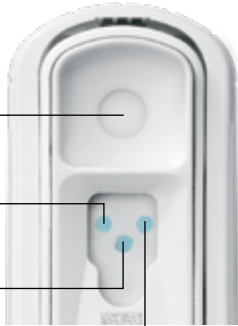
5. Read the result at **7 minutes**.

Whole blood†, serum, or plasma sample

400 mg/dL calibrator spot

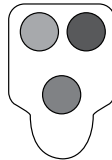
Sample spot

800 mg/dL calibrator spot



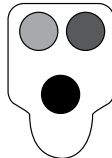
≤400 mg/dL IgG

Color intensity of sample spot is lighter than or equal to the 400 mg/dL calibrator spot.



400–800 mg/dL IgG

Color intensity of sample spot is darker than the 400 mg/dL calibrator spot but lighter than or equal to the 800 mg/dL calibrator spot.



>800 mg/dL IgG

Color intensity of sample spot is darker than the 800 mg/dL spot.

For more information or to order this test, visit idexx.com/foal.

*Before beginning any test, refer to the package insert for complete instructions.

†Anticoagulated whole blood (e.g., EDTA, heparin), serum, or plasma sample.

